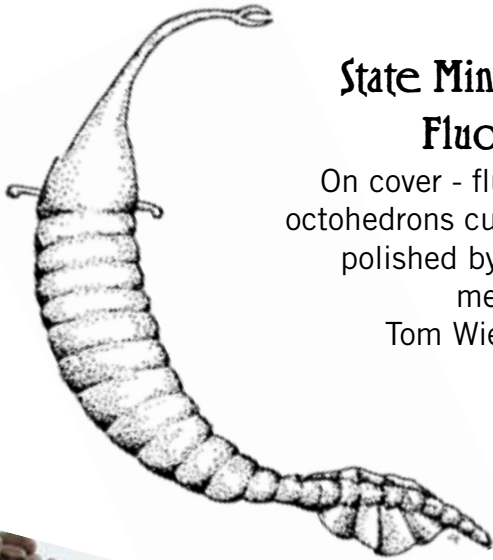


State Fossil Tully Monster

The Tully monster was a soft-bodied, invertebrate, marine animal - an animal that has no shell or backbone and lived in the ocean. It had an elongated, segmented body that tapered at both ends.

At the front was a long snout ending in a "jaw" with eight tiny "teeth." At the other end was a tail and two fins. Two eyes on stalks projected out sideways near the front of the body. Judging from the streamlined shape, flexible body and maneuverable fins, it's likely the Tully monster was an active swimmer. Perhaps, like a modern squid, it hovered near the sea bottom. The Tully monsters' jaws and apparent swimming abilities suggest that they attacked other marine animals such as jellyfish and shrimp, perhaps piercing their prey with their teeth and sucking out the juices.



State Mineral Fluorite

On cover - fluorite octohedrons cut and polished by club member Tom Wiesner.

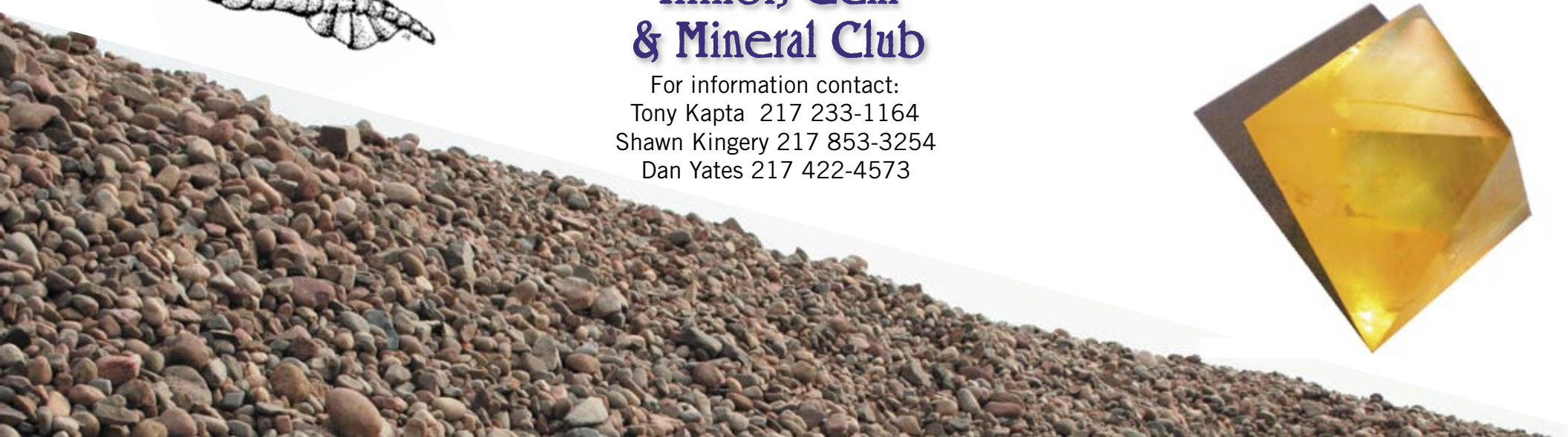
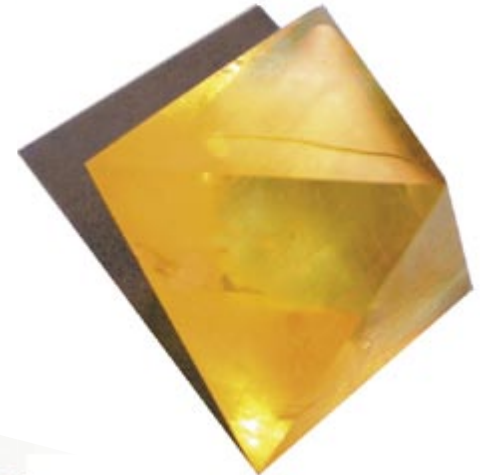
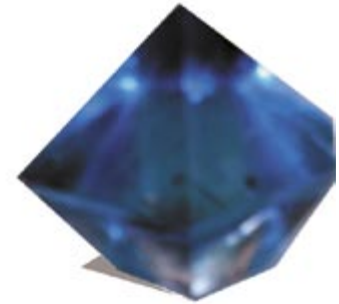
Learn
Discover
Explore
Share
Enjoy!



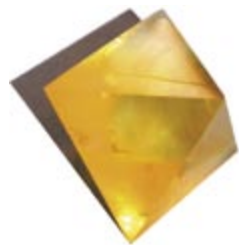
the Central Illinois Gem & Mineral Club

For information contact:
Tony Kapta 217 233-1164
Shawn Kingery 217 853-3254
Dan Yates 217 422-4573

You are invited . . .



. . .to join us in discovering the hidden treasures at our feet.



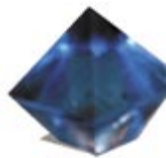
The Central Illinois Gem & Mineral Club (**CIGMC**) was formed in 1952 to foster interest and appreciation in the geological sciences (rocks, minerals, gemstones, and fossils), lapidary and jewelry arts, as well as the presentation of educational programs designed to improve the general knowledge and understanding of these areas.

In short: events, field trips, fun and friends, while learning!

Meetings

The members of the Club meet at 12:00 p.m. (for lunch and social), with the meeting starting at 1:00 pm on the first Sunday of the month, at Claire's Restaurant, 2502 E. William Street, Decatur, IL. Guests are welcome!

If the first Sunday is on a holiday weekend, we will meet the following Sunday afternoon. Please call a member listed on back for directions if needed.



Membership & Dues

Annual dues are \$15 for an individual and \$20 for a family or couple and are due in April.

Youth members are invited at a discounted rate. This also enrolls you in the insurance coverage provided by the club as you must be a member to be covered by this insurance for club-sponsored events.

The newsletter is sent to members monthly via email or regular mail. The club also has a website (cigmc.earthinsync.com/clubhome.html) and we are also on Facebook as a way to keep members informed and provide a forum for rock-related discussions.

Field Trips

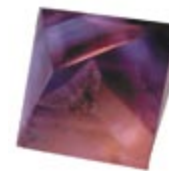
Field trips are open to members only due to insurance requirements, and are arranged for Saturdays. Some field trips require a safety course prior to the trip, as well as steel toe shoes or boots and hard hats. Junior members must be accompanied by an adult. Some fieldtrips have age restrictions (over 10 yrs).

Newsletter

CentrILL Gems is the newsletter of the CIGMC and is published monthly via email or regular mail. A sample copy of the newsletter is posted on the club website at cigmc.earthinsync.com/clubhome.html.

Benefits of Membership include

- Monthly Newsletter • Club Website*
- Annual Show • Insurance Coverage for Club Events*
- Picnics, swaps & trades, trips to local shows & events*



The Annual Show features:
*Member Collections & Specimens
Fossils, Minerals & Gemstones
Jewelry, Beads, Findings
Lapidary Arts, Demonstrations
& Kids Corner*

The Central Illinois Gem & Mineral Club hosts the Annual Gem & Mineral Show in Decatur, Illinois. We have 6-7 dealers, and several demonstrators, a club member swap on Saturday, silent auctions running all 3 days, Kids Area, Scout booths and member exhibits. To see how you can participate, please contact our Board Members.

We have a designated Kid's Day on Friday during the Show from 9-3pm. Activities for children are highlighted and discounted. We welcome youth groups, Scouts, school groups and their chaperones; and are admitted free of charge.

Our members volunteer their time and effort and are pleased to have provided over 59 Gem & Mineral Shows over the years.

There many opportunities for junior members to work at the shows, to earn badges and give something back to our community.

For dealer information, group tickets and flyers, please call a member listed on back.

We talk rocks! Many of our members have 20 or more years of experience collecting, and love to share their interest.